



## ASSET MANAGEMENT SOFTWARE

A complete solution for advanced asset management and risk control, built to drive operational excellence in physical asset-intensive industries.

Our solution empowers **integrity, maintenance, and operations managers**, providing the tools they need to make strategic decisions, optimize resources, and ensure compliance with operational objectives.

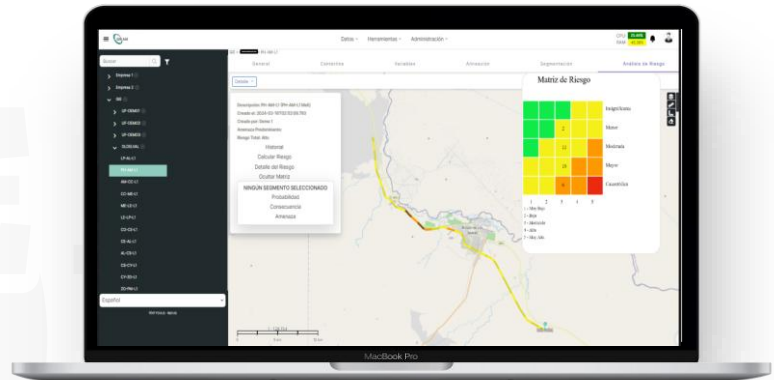
GIEAM is a robust solution developed with an approach based on **preventive maintenance and performance management**. Developed from 30 years of experience in the industrial and energy sectors. It makes it possible to anticipate potential risks, reducing costs, guaranteeing the continuity and security of your operations and compliance with regulations and legal requirements.



**GIEAM**  
**ASSET MANAGEMENT SOFTWARE**

# Diversity of Functions at Your Fingertips

Designed to offer you a comprehensive experience, providing you with a wide range of tools and functionalities.



## >> MANAGEMENT OF INFORMATION

The system is prepared for both individual and bulk information loading.

It has digital forms (Android App) that allow an efficient process of collecting information in the field, in addition to maintaining continuous synchronization with the platform.

## >> RISK MANAGEMENT

Perform Risk Analysis, with accessible and configurable algorithms. Display of results in different formats (spatial, boards, matrices). Logs of risk runs.

## >> INTEGRATION ArcGIS

ArcGIS-based mapping information. The tool allows you to import and visualize the assets with all their characteristics and components, in various layers, in a geo-referenced way and with the possibility of filtering the visualization of the variables or components of interest.

## >> MANAGEMENT OF MAINTENANCE

Based on the result of the risk runs in conjunction with the planning module, the resulting OT (Work Orders) notices are released with the recommended priority level. These notices are sent to the user's CMMS via API's for management of the corresponding OTs. Within this module are the following functionalities: PPD; Damage by third parties; Change management; Potential impact.

## >> DATA CORRELATION

Cross-analysis of critical information for predictive purposes. Powerful functionality that allows you to interpret results and perform analysis.

## >> REPORT MANAGER

Fast and effective report generation by integrating with PowerBI EMBEDDED or exporting data for external consumption with the desired BI tool.

**REQUEST A DEMO TODAY**

**Experience the power of our software first-hand and discover how it can transform your business.**



[contact@giegroup.net](mailto:contact@giegroup.net)

We are by your side, ensuring clean and safe operations

## CHARACTERISTICS



### Hosting

Installation in top-of-the-line clouds on the market.



### Access Management

Roles and profiles with user-managed levels and access



### Safety

Encrypted channel connections and two-factor authentication



### Backup

100% secured information on redundant sites

## Integrations

Integration is key in today's digital ecosystem. Our software is designed to connect seamlessly with a wide range of tools and platforms, boosting the efficiency of your workflow



### CMMS

Synchronization with the management systems used in the market



### SCADA and other Platforms

Through WEB Services, the tool synchronizes information of interest to the user.



### GIS

GIS Database Import and Visualization

## Support

Our support service is a fundamental pillar that distinguishes us in the market. Provided directly by our development team, we guarantee superior and agile quality support, backed by in-depth knowledge of both the software and the industry.

### GIE AM ROADMAP



**PIPELINE MODULE**  
DEVELOPEMENT 100%



**PLANTS MODULE**  
Development 60%



**WELL MODULE**  
Development 30%



[contact@giegroup.net](mailto:contact@giegroup.net)

We are by your side, ensuring clean and safe operations